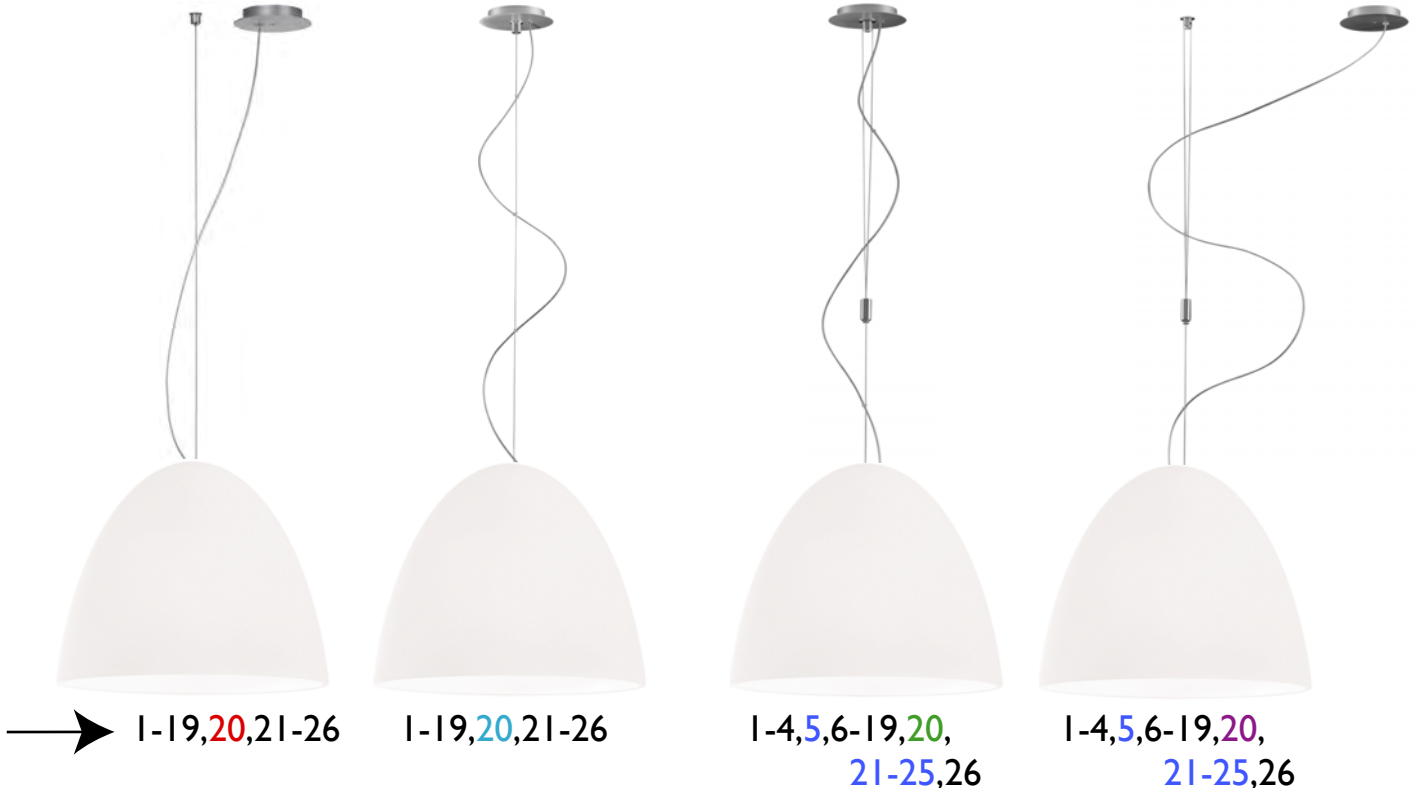


## BI 17A

## ZI 17A



- (D)** Elektrische Anschlüsse dürfen nur vom Elektrofachmann ausgeführt werden.
- (GB)** Electrical connections may be carried out by professional electricians only.
- (F)** Les raccordements électriques doivent être effectués uniquement par un électricien qualifié.
- (I)** L'apparechio d'illuminazione è sicuro solo se installato da personale qualificato.
- (PL)** Podłączenia elektryczne mogą zostać wykonywane tylko przez elektryków.
- (ES)** La instalación debe realizarse por personal cualificado.
- (RU)** электрические соединения могут осуществляться только профессиональным электриком.



Reinigung der Leuchtenteile nur mit trockenem weichem Tuch.

Mit geeigneten Leuchtmitteln kann die Leuchte mit Universaldimmern (\*) gedimmt werden.

Cleaning of luminaire parts only with dry and soft cloth.

With suitable bulbs dimming of brightness of the luminaire is possible with an universal dimmer (\*).

Nettoyage des parties de la lampe avec un chiffon sec et doux.

Avec des ampoules appropriées la variation de luminosité de la luminaire est possible avec un variateur universel (\*).

Pulizia di parti di apparecchi solo con un panno asciutto e morbido.

Con lampadine adatti la lampada può essere regolata con un dimmer universali (\*).

Czyszczenie tylko suchą miękką ściereką.

Przy odpowiednich żarówek lampy można ściemniać uniwersalnymi ściemniaczami.

Dzięki odpowiednim żarówkom ściemnianie jasności oprawy jest możliwe z ściemniacz uniwersalny (\*).

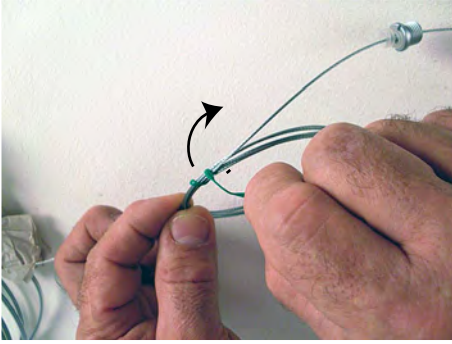
Limpeza de las piezas de luminarias con un paño seco y suave.

Con bombillas de la lámpara adecuados se puede regular con reguladores universales (\*).

Очистка светильников частей только сухой и мягкой тканью.

С помощью соответствующих ламп лампа может быть затемнена с универсальными диммерами (\*).

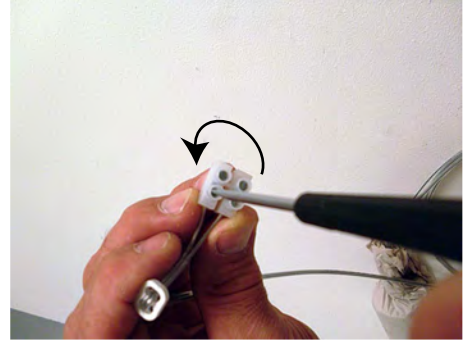
**(\*) = [www.vadsbo.de](http://www.vadsbo.de)**



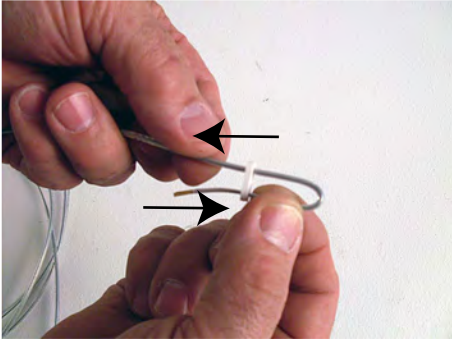
1



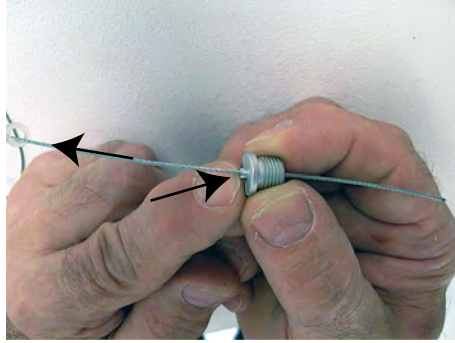
2



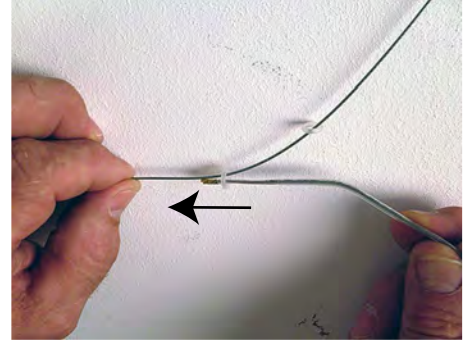
3



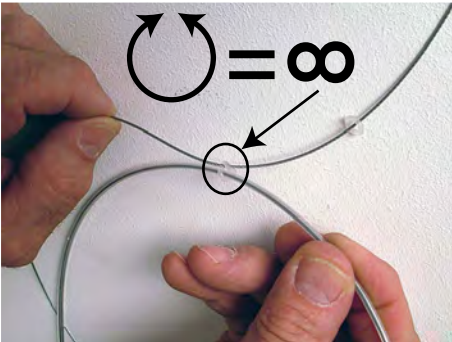
4



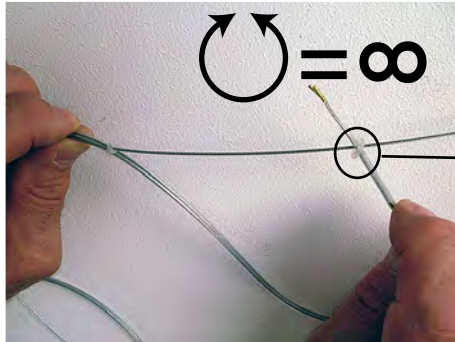
5



6



7



8

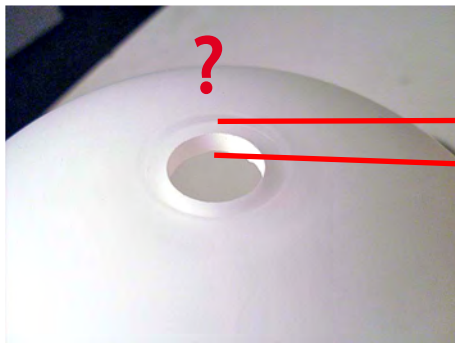


8.1

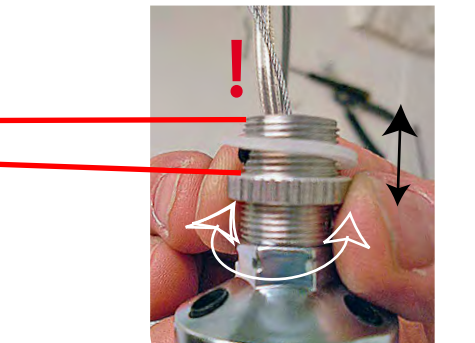
= ∞



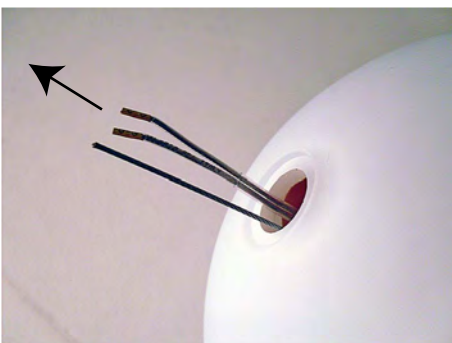
9



?



10



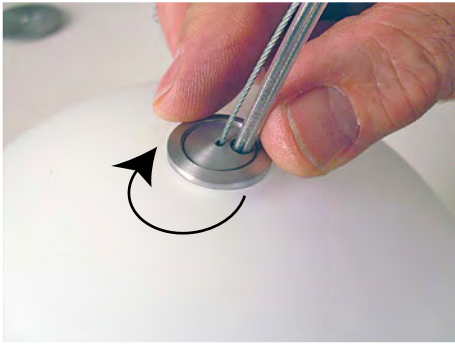
11



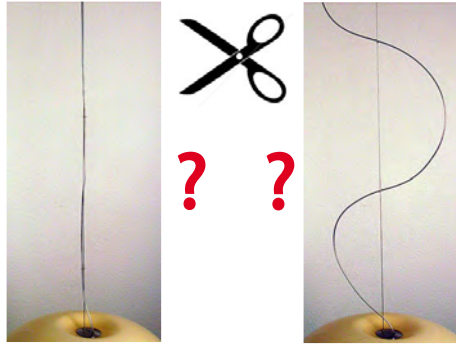
12



13



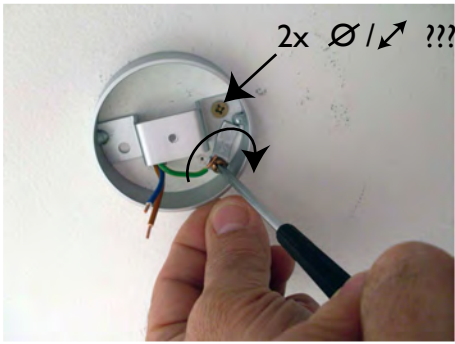
14



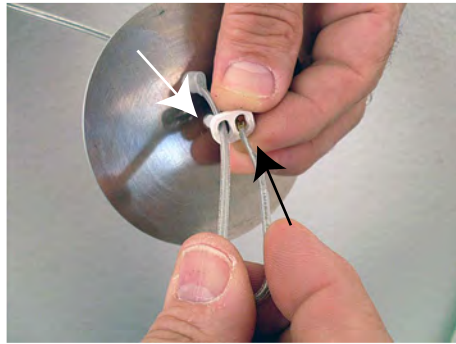
15  $\varnothing / \swarrow ???$



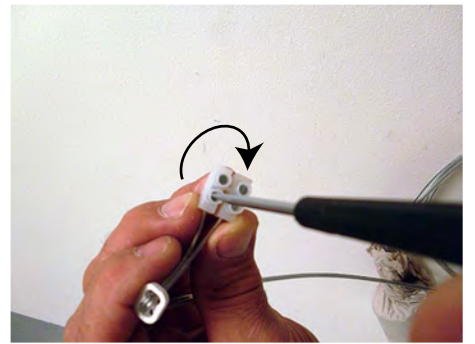
?  $\varnothing / \swarrow ???$



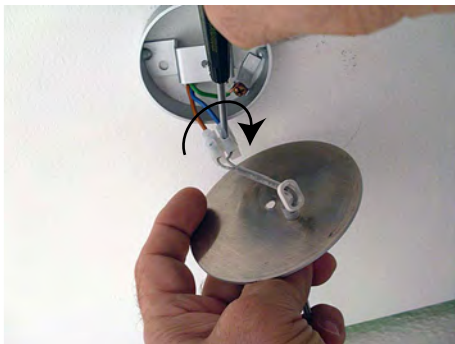
16  $\oplus \rightarrow \leftarrow \oplus$



17



18



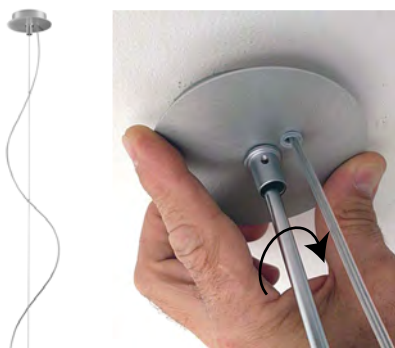
19  $N \rightarrow \leftarrow N$   
 $L \rightarrow \leftarrow L$



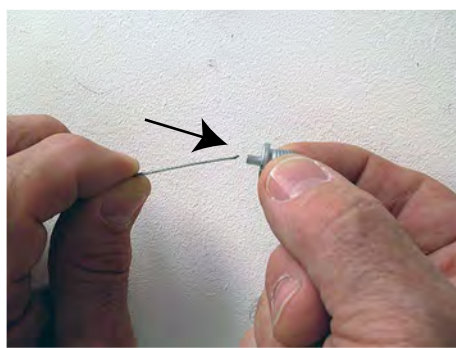
20.1



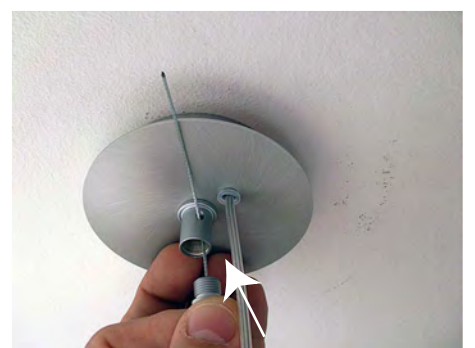
20.2  $\varnothing / \swarrow ???$



20



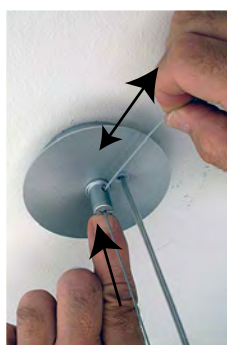
21



22



23



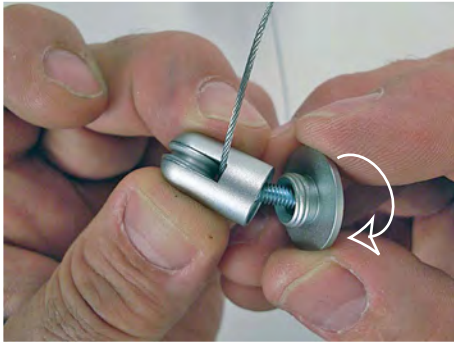
24



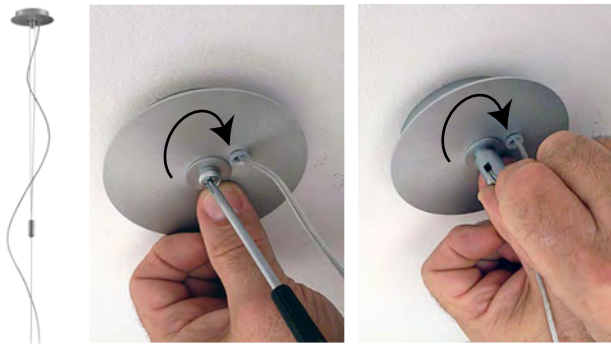
25



26

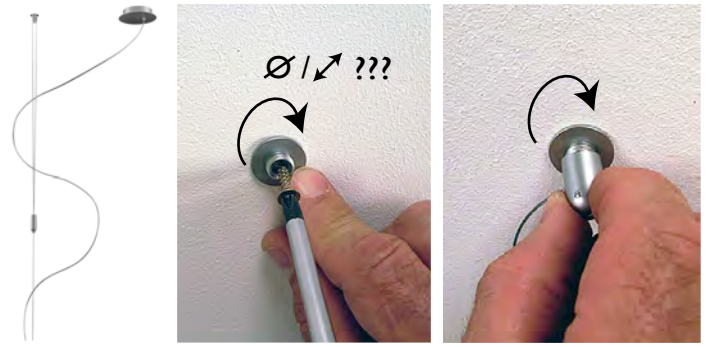


5



20

20.1

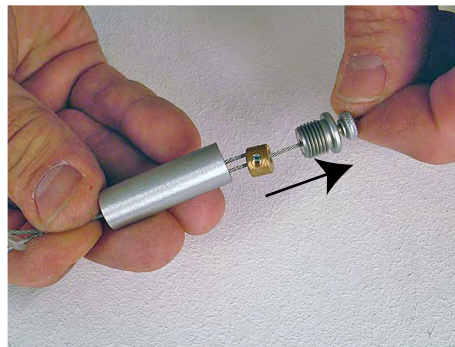


20

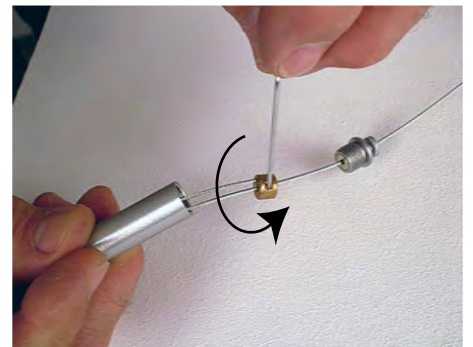
20.1



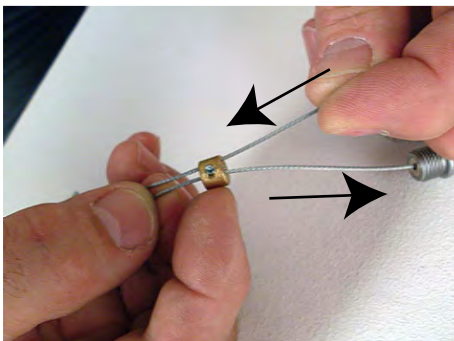
21



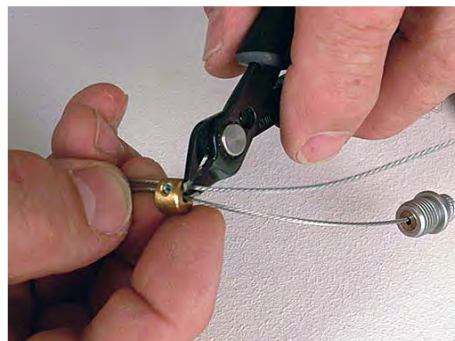
22



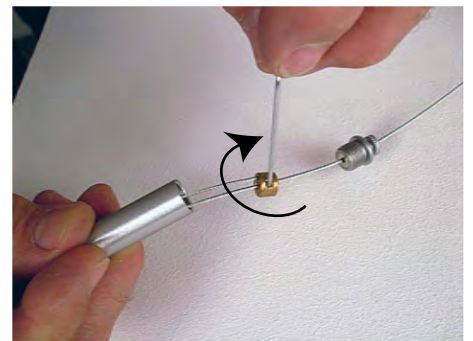
23



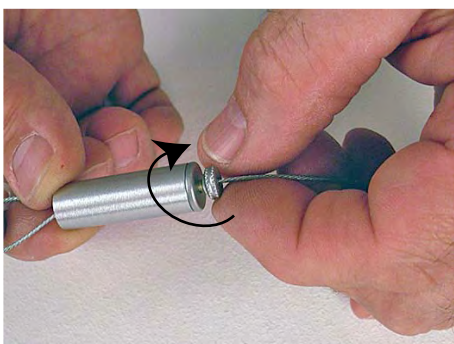
24



25



25.1



25.2