

## B87-89A



→ I-29

## Z87-89A



→ I-4,6-8,9-12,13-29

- (D) Elektrische Anschlüsse dürfen nur vom Elektrofachmann ausgeführt werden.
- (GB) Electrical connections may be carried out by professional electricians only.
- (F) Les raccordements électriques doivent être effectués uniquement par un électricien qualifié.
- (I) L'apparecchio d'illuminazione è sicuro solo se installato da personale qualificato.
- (PL) Podłączenia elektryczne mogą być wykonywane tylko przez elektryków.
- (ES) La instalación debe realizarse por personal cualificado.
- (RU) Электрические соединения могут осуществляться только профессиональным электриком.



Reinigung der Leuchtenteile nur mit trockenem weichem Tuch.

Mit geeigneten Leuchtmitteln kann die Leuchte mit Universaldimmern (\*) gedimmt werden.

Cleaning of luminaire parts only with dry and soft cloth.

With suitable bulbs dimming of brightness of the luminaire is possible with an universal dimmer (\*).

Nettoyage des parties de la lampe avec un chiffon sec et doux.

Avec des ampoules appropriées la variation de luminosité de la luminaire est possible avec un variateur universel (\*).

Pulizia di parti di apparecchi solo con un panno asciutto e morbido.

Con lampadine adatti la lampada può essere regolata con un dimmer universali (\*).

Czyszczenie tylko suchą miękką ściereką.

Przy odpowiednich żarówek lampy można ściemniać uniwersalnymi ściemniaczami.

Dzięki odpowiednim żarówkom ściemniania jasności oprawy jest możliwe z ściemniacz uniwersalny (\*).

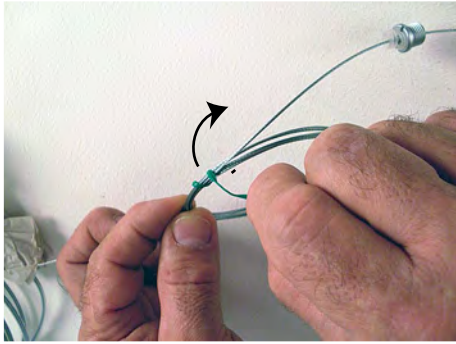
Limpeza de las piezas de luminarias con un paño seco y suave.

Con bombillas de la lámpara adecuados se puede regular con reguladores universales (\*).

Очистка светильников частей только сухой и мягкой тканью.

С помощью соответствующих ламп лампа может быть затемнена с универсальными диммерами (\*).

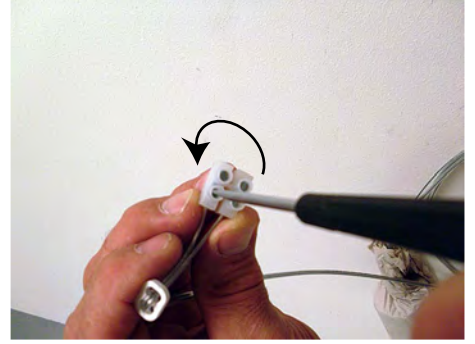
(\*) = [www.vadsbo.de](http://www.vadsbo.de)



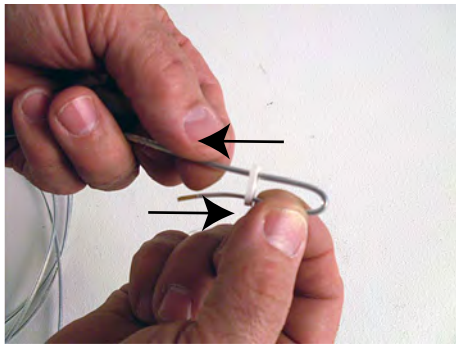
1



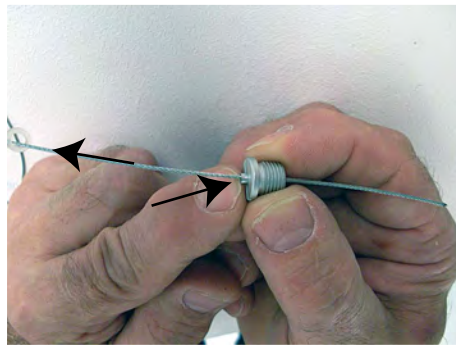
2



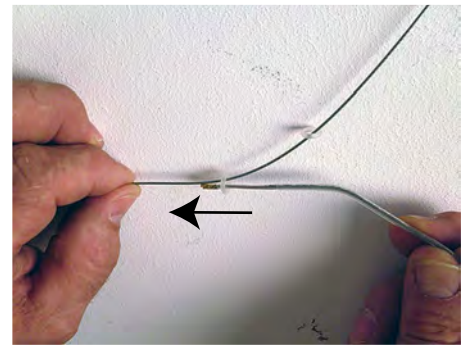
3



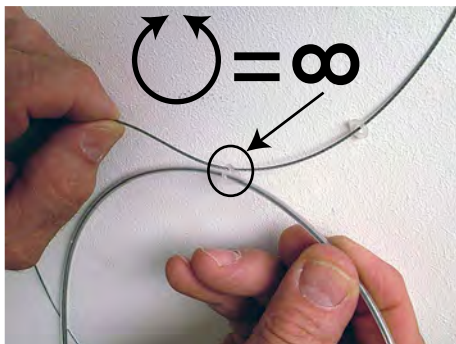
4



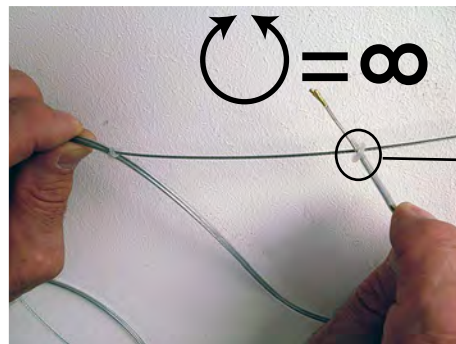
5



6



7



8



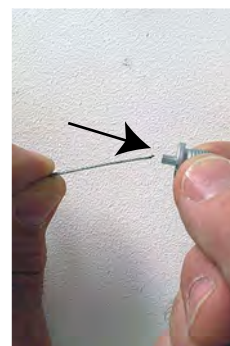
8.1 = ∞



? Ø / ↗ ???



9



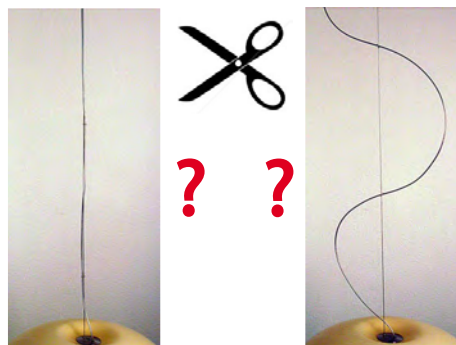
10



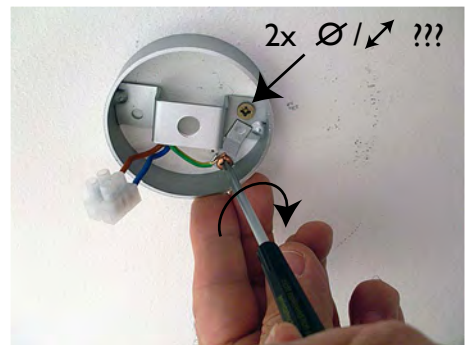
11



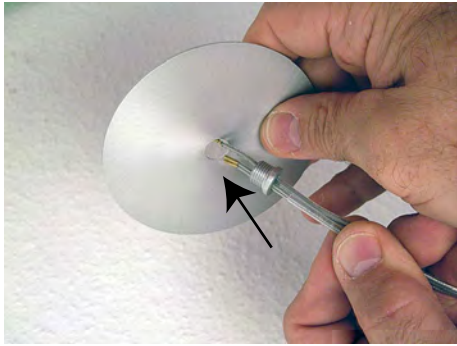
12



? Ø / ↗ ???



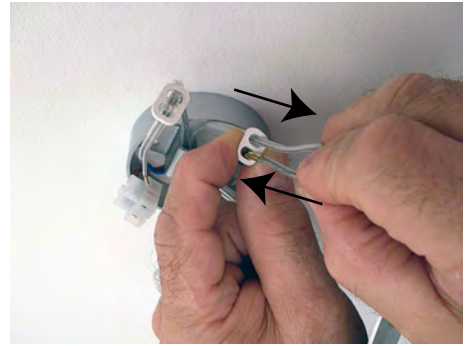
13 ⊕ → ← ⊕



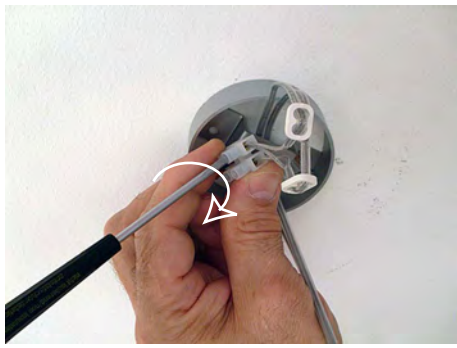
14



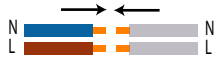
15



16



17



18



19



20



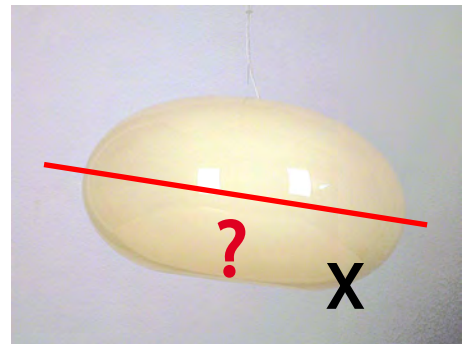
21



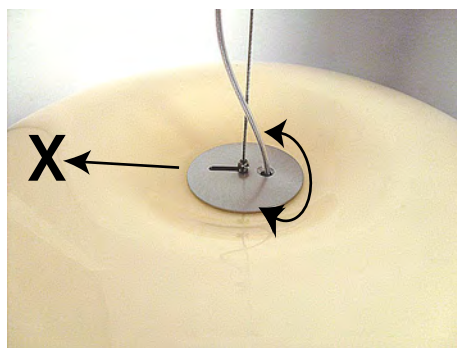
22a



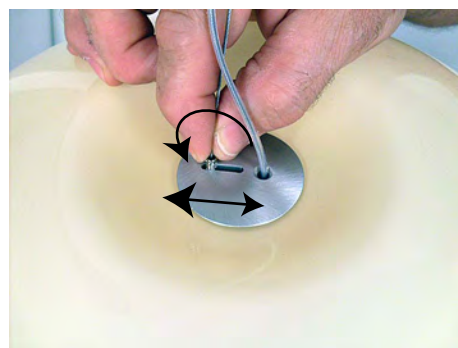
22b



23



24\_



25



26



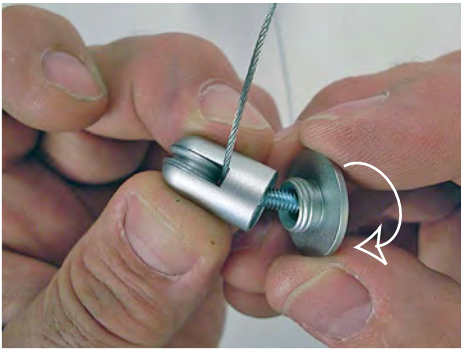
27



28



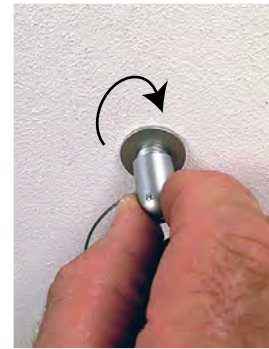
29



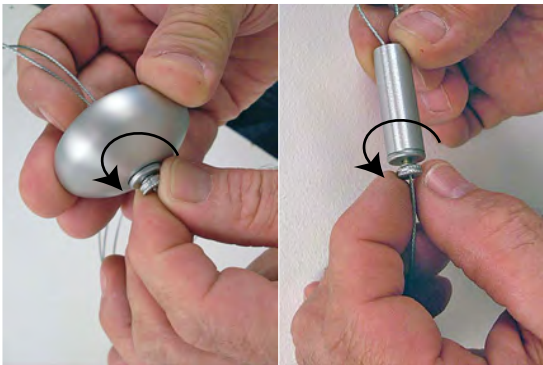
9.1



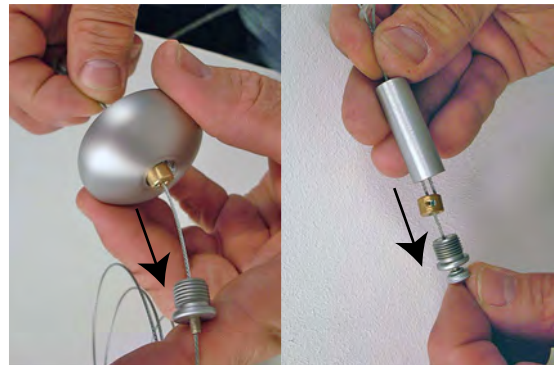
9.2



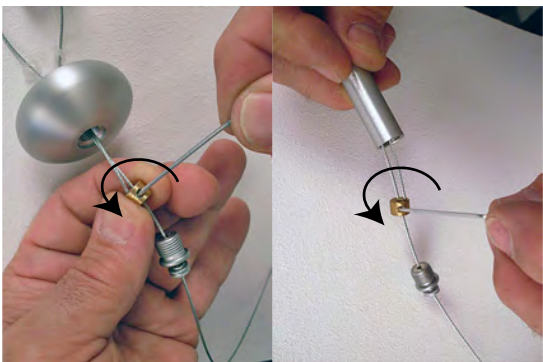
9.3



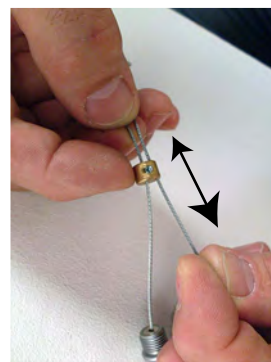
10.1



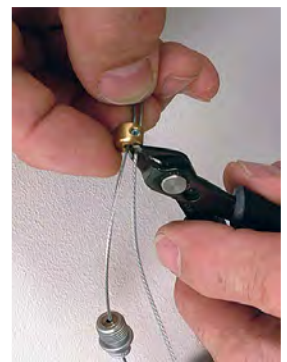
10.2



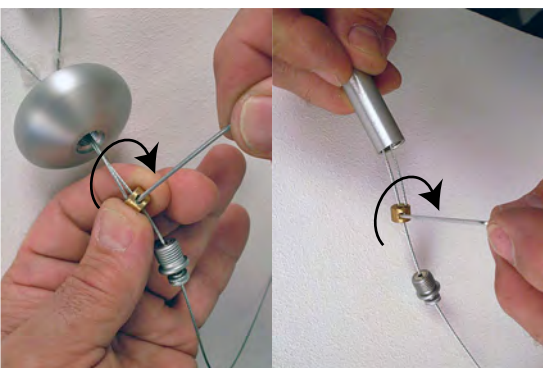
11.1



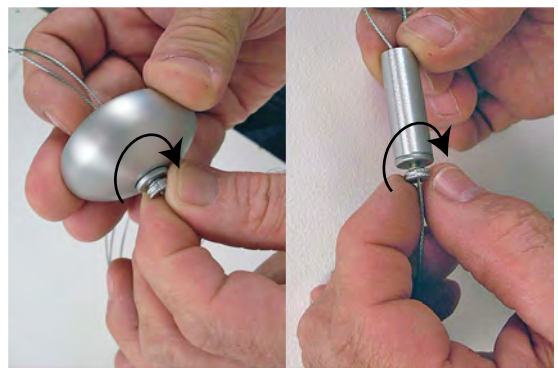
11.2



11.3



12.1



12.2