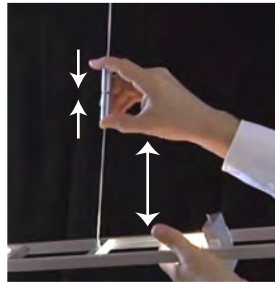
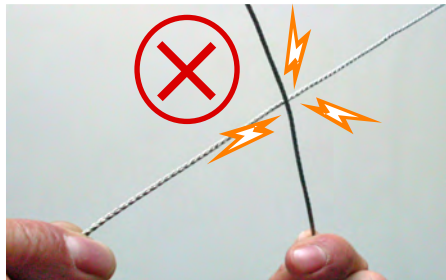


? DIMMER / DIMMING?

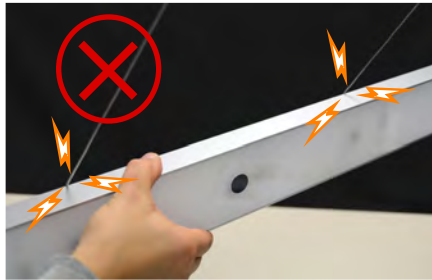


? Höhenverstellung / Height adjustment?

!!



!!

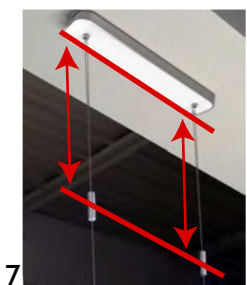
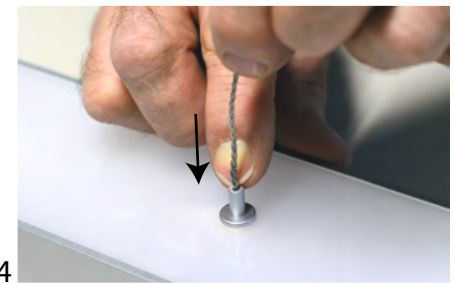
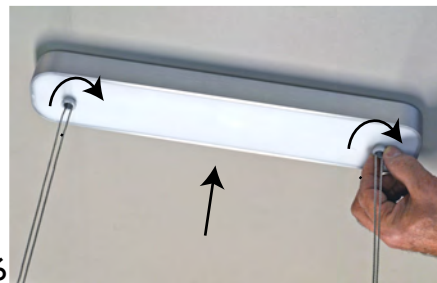
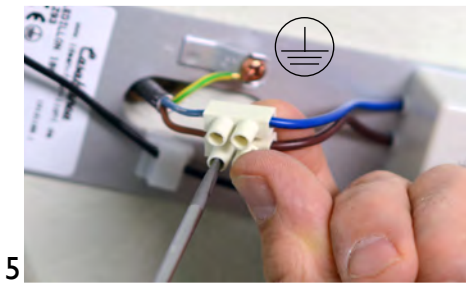
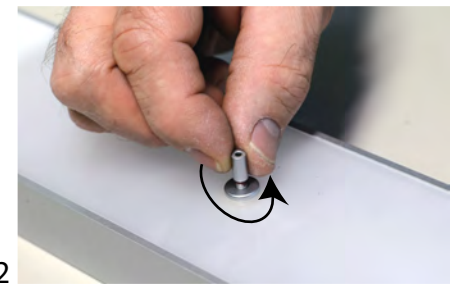
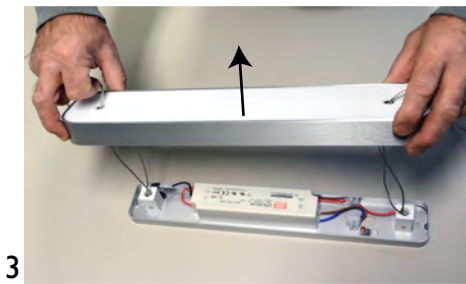
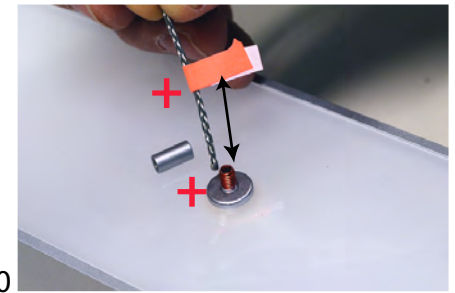
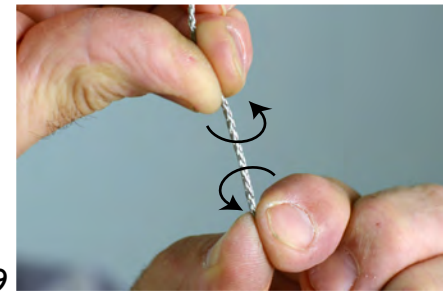
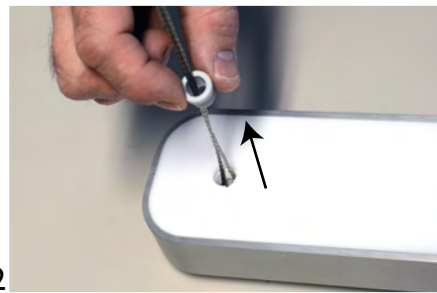


- Ⓛ Reinigung nur mit trockenem weichem Tuch!
- Ⓒ Clean only with a dry soft cloth!
- Ⓕ Nettoyer uniquement avec un chiffon doux et sec!
- Ⓜ Pulire solo con un panno morbido e asciutto!
- Ⓟ Czyść tylko suchą miękką szmatką!
- Ⓔ Limpie únicamente con un paño seco y suave!
- Ⓡ Протирайте только сухой мягкой тканью!

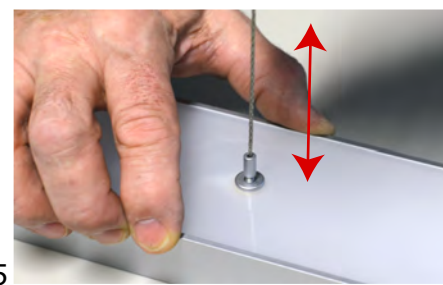
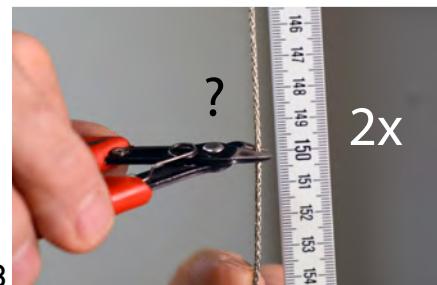


## PERFETTO

- Ⓛ Elektrische Anschlüsse dürfen nur vom Elektrofachmann ausgeführt werden.
- Ⓒ Electrical connections may be carried out by professional electricians only.
- Ⓕ Les raccordements électriques doivent être effectués uniquement par un électricien qualifié.
- Ⓜ L'apparecchio d'illuminazione è sicuro solo se installato da personale qualificato.
- Ⓟ Podłączenia elektryczne mogą być wykonywane tylko przez elektryków.
- Ⓔ La instalación debe realizarse por personal cualificado.
- Ⓡ электрические соединения могут осуществляться только профессиональным электриком.



?  
**nur Modell  
ZUG-Pendel  
/  
only for  
RISE&FALL  
suspension**



!!! Test/test/essai/prova/test/prueba